



PREP 2100P Preparative HPLC system

P/N SE020000

It is ideal system for preparative and flash chromatography by constant flow rate of mobile phase (0.1 - 100 ml/min). Detection at two wavelengths simultaneously allow verification of separated sample. Manual sample injection is provided using Valve B, system controlling and record of analysis is done by means of Analytical chromatographic software.

PREP 2100 PUMP with flow rate 0.1 – 100 ml/min



and limit of pressure 15 MPa is this pump suited for preparative applications in liquid chromatography. It is designed with two pump heads connected in parallel with piston diameter of 3/8".

Quite new concept of electronic controlling, pump drive, shape of cams and pressure transducer expand its functions.

Intuitive operating using simple keypad allows easy chose functions as follow:

- flow rate
- maximal flow rate- PURGE (for priming and washing)
- low pressure limit
- high pressure limit
- pulsation compensation on-off
- pressure unit (PSI, MPa or bar)
- control mode (by keypad, RS232 or using voltage)
- display brightness

There is possibility to use this pump by high pressure gradient mode, where are two, tree or four unit controlled from PC using RS232 or voltage.

By work with buffered solvents is possible to use pistons back washing.

PREP DUAL UV DETECTOR is a new type of UV



detector, which allows measuring absorbance of two wavelengths simultaneously in one cell. This unit is used in liquid chromatography to verify analyzed samples by means of a second wavelength or in situations when some peaks absorb on different wavelengths. It is possible to use the detector in analytical, preparative or flash applications by using different cells. Noise level at 254 nm is $\pm 1 \times 10^{-4}$ AU with an empty cell.

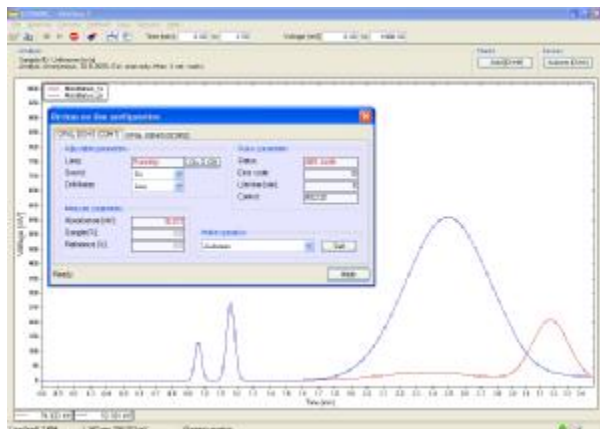
The unit's DAD (diode array detector) design offers many advantages:

- the wavelength setting can be changed from 200 up to 320 nm in increments of 1nm
- the unit is easy to operate, reference and sample signal are available for detector diagnostics
- output signal is available in both digital and analogue form on the output connector
- lamp work hours are counted using the built-in counter
- the detector cell is easy to replace from the side of the detector

- it is possible to **control the unit using the keypad, external logic signals or an RS232 interface**

functions, is it necessary add a SW to the system which allow it (for example Clarity). It is possible simple export data to any SW so there is not necessary buy A/D converter.

Analytical Software is designed with maximal effort



to do **easy operation** of chromatographic systems It is suited for **units controlling and data acquire/collecting**. Equipments are connected to the PC using **RS232, or USB** (by means of RS232/USB converter). **Software detects automatically almost of all units**, so there is no need complicated communication installation.

Program most important features:

- **Easy installation**
- **Connecting using USB or RS232**
- **No need A/D converter**
- **Possibility to start up to 8 stations at the same time**
- **Possibility of external start and external mark**
- **Secured access**
- **Units controlling and data collecting from one place**
- **Data export in various formats:**

Text formats: native text format, two column text format and CSW Clarity text format

Binary formats: native binary CH-format, CSW (1.7) Raw format and Matlab MAT format

Start of data collecting and eventual **marks** (for example by fraction collecting) is it possible to do using **keyboard or using external unit**.

System contains:

| Description | P/N |
|---|------------|
| PREP 2100 Isocratic Pump | PH000000 |
| PREP Dual UV Detector | 73E000000 |
| Inject system for valve B (set) | 54107001 |
| Preparative Injection Valve B | 54100000 |
| External sample loop 1 ml SS | 54298000 |
| Box for Bottles MF1 | ZA000000 |
| Mobil phase reservoir LCT 02, 1L | 56940000 |
| SS Mob Phase Filter 25um 1/8"Pipe OD | JR-3678-25 |
| PEEK Union 1/8" (1/4"-28) without Fittings | JR065 |
| PEEK Nut 1/8", 1/4"-28 threads | 00000450 |
| KEL-F Ferrule 1/8" | 00000470 |
| ANALYTICAL Chromatographic software | AF000000 |

Computer is not include but could be delivered separately.

This PREP HPLC System is easy upgradable to Binary, Automate by adding AutoSampler, fraction collector etc,.



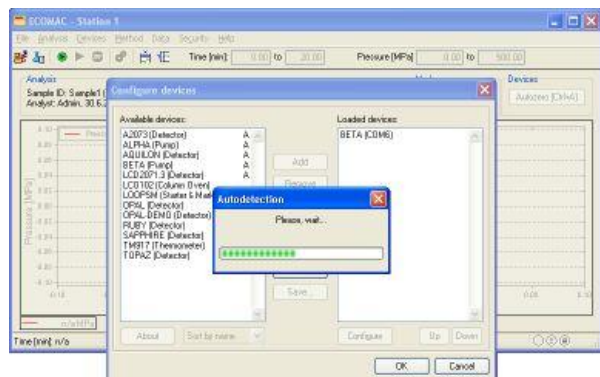
Mobile Phase
Recycler



Autosampler



Fraction Collector



HPLC Solutions

an entity of Analytical Instruments Solutions

#E67 and E68 Ravi Park, Opp. Sainath Park, Baroda, India-390015.

Tel: +91-265-2253620/3952238, Fax: +91-265-2254395, E-mail :info@ais-india.com